

Jewellery, Watches, Coins & Silver, 2nd Jan, 2026 13:00

- 1 A sapphire and diamond dress ring and stud earrings en-suite; the three stone ring centred with a step-cut sapphire between two round brilliant-cut diamonds, in a coronet mount leading to shank, marked '18ct & PT', size M½; together with a pair of cluster stud earrings, in metal mounts testing as 18ct, to later-added post fittings testing as 9ct; total weight of items 4.0 grams. (2) **£400-600**



- 2 Two 9ct gold chain bracelets; to include a fancy hinged-link chain with a lobster clasp, 19.0 cm in length; and a curb link bracelet in rose gold, 19.0 cm long; both bearing British import marks, total weight of items 16.1 grams. (2) **£300-500**



- 3 A shell cameo brooch cum pendant, depicting a classical portrait of Athena, in a yellow metal oval mount with plain border, the reverse stamped '10K', with brooch and locking C clasp fitting and hinged pendant bale, 5.0cm x 4.0cm, 14.0 grams. **£100-200**



- 4 An Edward VII 1902 half sovereign in 9ct gold ring mount, of scrolled foliate design with twisted cable details, size L, 8.5 grams. **£400-600**



- 5 Three stacking rings; to include a 9ct gold twisted rope ring, with British assay mark, size S; a matching ring of conforming design in size R½, yellow metal surface testing as 9ct; and an enamel band with twisted cable design, in unmarked yellow metal testing as 14ct, size R; total weight of items 5.8 grams. (3) **£100-150**



Jewellery, Watches, Coins & Silver, 2nd Jan, 2026 13:00

- 6 Tiffany & Co. - An '1837' cuff bangle, the slightly convex wide band signed and stamped '925' to the centre, dated 2001, 5.6cm inner diameter, 86.5 grams.

No box. No papers. **£200-300**



- 7 A diamond-set half eternity ring, with an estimated total diamond weight of 0.40ct, comprising five graduated round brilliant-cut diamonds, spaced with diamond-set intervals, to a white metal band marked '18ct', size S, 3.0 grams. **£200-300**



- 8 A single row cultured pearl necklace, comprising a series of round cultured pearls with an approximate diameter of 8.0mm, hand-knotted to a floral box clasp sculpted as a flowerhead with diamond highlight to the centre, yellow metal stamped '14K', overall length 40.5cm, 34.6 grams. **£200-300**



- 9 A long fancy curb link necklace, completed with a lobster clasp, yellow metal marked '18ct', 62.0 cm long, 30.85 grams. **£1,500-2,000**



- 10 A white sapphire line bracelet, comprising a series of fifty round-cut white sapphires in four claw settings, each to a teardrop-shaped articulated link, measuring 17.5cm in length, in white metal stamped 'K18', 4.0 grams. **£300-500**



Jewellery, Watches, Coins & Silver, 2nd Jan, 2026 13:00

- 11 A group of three brooches; The first a stylised belt brooch set with an oval cut purple paste, the border depicting a fastened belt, in gilt metal, to brooch and C clasp fitting, 2.1cm x 2.2cm, 3.5 grams; The second a shell cameo brooch, depicting the profile of a young lady with foliate details, to a scrolling 9ct gold border, to base metal pin fitting and C clasp, 5.5cm x 4.5cm, 12.0 grams; The third a mourning brooch, the border claw set with twelve reddish-purple pastes, the central crystal-covered cartouche enclosing dried foliage, encircled by a row of seed pearls, in base metal, pin fitting deficient, C clasp present, 1.7cm x 2.0cm, 5.0 grams. (3). **£200-300**



- 12 A small group of jewellery items; The first comprising a 9ct gold heart pendant, featuring two crystal-covered heart-shaped panels, bordered in 9ct yellow gold, (pendant bale deficient); The second a green paste pendant, in yellow metal marked '9ct', of foliate design, drop measuring 40mm including bale; the third a horseshoe brooch marked '9ct'; the fourth a bar brooch collet-set with a blue synthetic sapphire in yellow metal surface testing as 9ct, with base metal pin fitting. Total weight of items 17.5 grams (4). **£200-300**



- 13 A small collection of jewellery items; to include a Danish Modernist brooch set with amethyst by Niels Erik From, an Arts and Crafts brooch with pearl accents by Mogens Ballin, a strand of cherry bakelite, a graduated carnelian bead necklace, a medal commemorating 25th anniversary of the death of Lord Baden-Powell, and others. **£200-300**



- 14 A pair of cufflinks with diamond accents, each comprising a diagonally striated rectangular panel, set with a round brilliant-cut diamond of 2.5 mm at the corner, fitted with cufflink swivels, yellow metal marked '18ct OBLO', panel measures 2.0 x 1.4 cm, total weight of items 15.3 grams. **£600-800**



- 15 Three gem-set rings; to include an elongated jadeite panel in dark green colour, measuring 3.2 x 1.2 cm, set in metal testing as 9ct, size L; a carved jadeite Buddha ring in yellow metal testing as 14ct, size L; and a faience scarab dress ring set in metal testing as 18ct, size M; total weight of items 14.8 grams. (3) **£200-300**



Jewellery, Watches, Coins & Silver, 2nd Jan, 2026 13:00

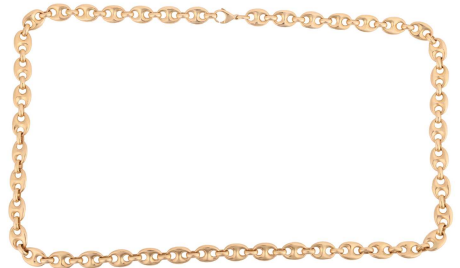
- 16 A collection of costume jewellery, comprising a faux pearl necklace with large floral pendant; a gem-set brooch of scrolling design marked 'Hobé'; a gem-set insect brooch marked 'Jeanne'; along with other gem-set earrings and a necklace. **£50-100**



- 17 A wedding band in 22ct yellow gold, consisting of a plain polished court-profile band, London 1928, size N½, 4.2 grams. **£250-350**



- 18 A long heavy anchor link chain, fastened with lobster clasp, marked as '750', link width 8.6 mm, overall measuring 61.5 cm in length, total weight of item 97.3 grams. **£5,000-8,000**



- 19 Tiffany & Co. - a 'City HardWear' silver beaded bracelet, signed and hallmarked, overall length 21.0 cm; together with a silver double hook eye bangle, London import marks, inner diameter 6.3 cm; total weight of items 34.5 grams. (2) **£200-300**



- 20 A small group of jewellery items comprising a Tiffany & Co turtle brooch in white metal marked '925', with branded pouch and box, a tribal-style silver fringe necklace and another smaller tribal-style silver pendant with matching earrings, and a white metal bracelet with angular links; 90.8 grams (5) **£100-200**

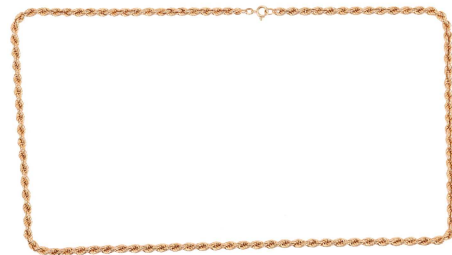


Jewellery, Watches, Coins & Silver, 2nd Jan, 2026 13:00

- 21 A pair of 'Marine knot' cufflinks, textured and terminated with nautical rope knot motifs, yellow metal marked '18ct', overall measures 2.5 cm wide, the total weight of items 13.83 grams. **£600-800**



- 22 A long twisted rope link necklace, completed with a spring ring clasp, yellow metal bearing Italian assay marks '750', registration number '23 AR', overall length 70.0 cm, 21.64 grams. **£1,000-1,500**



- 23 A single-row cultured pearl necklace, comprising a series of uniform round cultured pearls of approximately 7.4mm, in cream colour with rose overtones, the strand hand knotted and measuring approximately 95cm, 60.5 grams. **£150-250**



- 24 Two gold filled dress rings set with cubic zirconia, size R and size S respectively. (2) **£100-150**



- 25 A cherry bakelite necklace and earrings set; the necklace comprising graduated faceted bakelite beads, largest measures 29.0 x 19.0 mm, smallest 9.5 x 6.6 mm, with a screw clasp, overall length 84.0 cm; together with a pair of matching earrings with screw-on backs, in metal stamped 'sterling'; total weight of items 70.3 grams. (2) **£100-150**



Jewellery, Watches, Coins & Silver, 2nd Jan, 2026 13:00

- 26 A small collection of gem-set rings, to include; A diamond-set panel ring (broken), to a yellow metal ring shank marked '18ct' and 'Plat', size L, 1.5 grams; A white sapphire trilogy ring, to a yellow metal ring shank marked '9ct', size R ½, 2.0 grams; A white and blue sapphire eternity ring, in yellow metal surface testing as 9ct, size P, 4.0 grams; A ruby and white sapphire five-stone ring, to a yellow metal ring shank surface testing as 9ct, size Q, 3.5 grams; A signet ring with scrolled engraving, in yellow metal marked '9ct' size K, 1.5 grams; A plain 9ct gold band ring, size H ½, 1.0 grams. (6). **£200-300**



- 27 A 9ct yellow gold comedy and tragedy mask ring, size N, 2.5 grams. **£150-250**



- 28 A small group of jewellery items; including an Edwardian moonstone and ruby pendant on chain, of scrollwork design, marked '9ct', on a fine cable link chain; and a bow bar brooch set with sapphire and seed pearls; and a brooch in gilt; total weighable 5.1 grams. (3) **£200-300**



- 29 A mixed group of jewellery items; including examples of a Tiffany & Co. silver heart brooch by Paloma Picasso, in branded pouch; a silver spoon and pusher in a Garrard fitted box; a Danish silver brooch set with an amber cabochon by Niels Erik From; a silver mesh link necklace in Cecilia Colman gallery box; a pair of oval cufflinks stamped '925 Mexico'; a cameo brooch with a yellow metal mount marked '9ct'; a Baccarat floral pendant; a pair of pendant earrings in Cecilia Colman gallery box; and other items. **£150-250**



- 30 A modernist silver necklace with three barrel-shaped red glass beads, to a chain of elongated bar links, interspersed with flattened geometric motifs, and a conforming hook clasp, with hallmarks for London 1975, maker's mark "FJM", length 46.0cm, 47.7g. **£30-50**



Jewellery, Watches, Coins & Silver, 2nd Jan, 2026 13:00

- 31 Two 9ct gold necklaces; the first one comprising a series of belcher links, completed with spring-ring clasp, 51.0cm long; the other of twisted rope links, fastens with spring-ring clasp, 40.0cm in length; total weight of items 17.1 grams. (2). **£400-600**



- 32 A small group of jewellery items, comprising a cameo brooch depicting the classical profile of a woman, to a woven border surface testing as 9ct, with base metal pin and C clasp, 3.2cm x 2.5cm, 6.5 grams; A curb link chain bracelet with 9ct gold heart padlock, 15.0cm in length, 8.0 grams; A single 9ct yellow gold cufflink, 3.0 grams; A cultured pearl pendant; A double cable-link chain in yellow metal surface testing as 9ct, completed with a spring-ring clasp, 22.0cm in length, 3.0 grams; A broken S-link chain, in yellow metal surface testing as 9ct, 0.5 grams. (6). **£250-350**



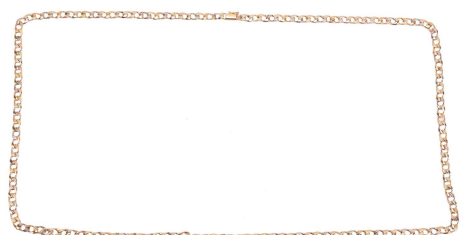
- 33 A group of jewellery items comprising a diamond-set bracelet, in a silver mount, together with a glass-filled ruby-set necklace and a pair of glass-filled ruby cluster drop earrings, both in white metal marked '925'; 33.7 grams. **£200-300**



- 34 Two strands of beaded necklaces; to include a single row of faceted tanzanite beads, completed with a foliate hook clasp, unmarked yellow metal testing as 14ct, overall length 47.5cm; and a strand of button-shaped cultured pearls, with an openwork navette-shaped fish hook clasp, in white metal stamped '14K', 41.0cm long; 30.2 grams. (2). Please note: Unless otherwise stated, lots have been tested using an electronic tester. This is a surface test only and is not a guarantee of metal purity. **£150-250**



- 35 A long tri-coloured curb link necklace, comprising a series of flat curb links with striated details, alternating in three colours, completed with a box clasp, Italian assay marks '750', overall length 90.0 cm, 34.25 grams. **£1,500-2,000**



Jewellery, Watches, Coins & Silver, 2nd Jan, 2026 13:00

- 36 Hermès - a narrow 'Clic H' bracelet with black enamel and gold-tone metal, signed and marked, internal diameter measures 6.1 cm; together with an enamel bracelet with sky blue floral patterns, signed and marked 'Made in Austria + M', 6.9 cm wide. (2)
No box no papers. **£150-250**



- 37 A long fancy link necklace, comprising a series of flat elongated cable links, with navette-shaped fluted hollow spacers, completed with a spring-ring clasp, Italian assay marks '750', overall length 87.0 cm, 30.73 grams. **£1,500-2,000**



- 38 A small group of jewellery comprising five 9ct gold rings, a pair of 9ct gold cufflinks, an 18ct gold signet ring (broken) and a cable link chain (broken), surface testing as 9ct; Weight of hallmarked items 25.0 grams. **£250-350**



- 39 A silver compact, another in Art Deco taste, a silver pill box, another with gilded interior and a small quantity of costume and white metal jewellery, including a Charles Renée MacIntosh style brooch. **£100-200**



- 40 A single-strand cultured pearl necklace, comprising round cultured pearls of 6.7mm, hand-knotted to an octagonal fish-hook clasp embellished with a pearl accent, in 9ct white gold, Birmingham assay marks, 64.0cm in length, in a Cairncross case, 37.0 grams. **£150-250**



Jewellery, Watches, Coins & Silver, 2nd Jan, 2026 13:00

- 41 A diamond-set steel brooch, the cylindrical bar with spiral design, flush-set with four old-cut diamonds, with yellow metal brooch pin fitting to the reverse, surface tested as 18ct gold; 7.3 grams **£150-250**



- 42 A small group of jewellery items comprising a CZ-set line bracelet, in yellow metal marked '925', together with an emerald-set pear-shaped pendant, in white metal marked '925', and another diamond-set circular pendant in white metal marked '925'; 15.9 grams. **£200-300**



- 43 An opal cluster ring, the openwork mount with beaded details, claw-set with five precious opal cabochons, leading to a tapering band, yellow metal stamped '14K', size K, 5.5 grams. **£300-500**



- 44 Hermès - A Mini Pop H pendant on chain, the gilt metal pendant with red lacquer, 1.6 x 1.4 cm, on a omega chain in white metal stamped '925', cased.

No paper. **£50-100**



- 45 A large group of mixed quantity of yellow metal jewellery items, to include examples of charms, gem-set pendants, earrings and rings etc.; along with other gilt items in base metal. Total weighable 11.8 grams.
Please note: Unless otherwise stated, lots have been tested using an electronic tester. This is a surface test only and is not a guarantee of metal purity. **£300-500**



Jewellery, Watches, Coins & Silver, 2nd Jan, 2026 13:00

- 46 Two pendants, comprising a diamond-set spiral pendant, in 9ct yellow gold, to a 9ct gold paperlink chain, together with a 9ct gold cross pendant, to a 9ct gold flat curb chain; 11.0 grams (2). **£400-600**



- 47 Chanel - a crystal cocktail ring, the floral cluster centred with an applied CC logo motif, to an embossed shank, oval plaque signed and marked '10 V', size N½. No box no papers. **£80-120**



- 48 A pair of Arts and Crafts drop earrings, of floral and scrollwork design, each centred with a round agate cabochon in collet, with screw fittings, unmarked white metal testing as silver, 2.2cm drop, in a fitted case, 3.7 grams. Please note, unless otherwise stated, all lots have been surface tested using an electronic tester, which is not a guarantee of metal purity. **£50-80**



- 49 Tiffany & Co. - a bull keyring, open hoop with screw-in ball terminations, signed and stamped '925', 3.0 cm wide, 6.1 grams. In travel pouch. **£50-80**



- 50 A small group of jewellery items comprising a paste-set hinged bangle, in white metal marked '925', a diamond-set cross pendant, in bi-colour metal marked '9K', a paste-set crossover ring in white metal marked '925', size Q1/2, and a sapphire and diamond-set ring, in a yellow metal mount marked '585', size M; 18.5 grams (4) **£200-300**



Jewellery, Watches, Coins & Silver, 2nd Jan, 2026 13:00

- 51 A wedding band, with a plain polished band in white metal, bearing Israeli hallmark for 14ct, size Y½, 4.5 grams. **£150-250**



- 52 A mixed group of items, the majority jewellery, including an oval link bracelet, marked '925', several pairs of cluster bead earrings, a CZ-set cluster ring, stamped '925', a pair of gem-set earrings, a long fancy-link necklace and other items; 274.8 grams **£200-300**



- 53 A pair of cufflinks of rectangular form with striated design, the panels fitted with toggle swivels, yellow metal marked '18ct OBLO', panel measures 2.0 x 1.4 cm, total weight of items 16.5 grams. **£600-800**



- 54 A long heavy anchor link chain, fastened with lobster clasp, stamped '18ct', link width 9.0 mm, overall measuring 60.5 cm in length, total weight of item 99.35 grams. **£5,000-8,000**



- 55 A small group of jewellery items, comprising two cultured pearl necklaces, together with two gilt brooches, of floral and spray design; 42.7 grams (4) **£50-100**



Jewellery, Watches, Coins & Silver, 2nd Jan, 2026 13:00

- 56 A group of nine rings; comprising a diamond-set ring, composed of rows of baguette-cut diamonds, in a 9ct gold mount, size O, together with other gem-set rings, in yellow and white metal marked '925'; 39.3 grams (9) **£300-500**



- 58 A shell cameo brooch cum pendant, depicting the bust of a lady, to a 9ct yellow gold frame with woven border detail, base metal pin fitting and locking C clasp and additional pendant loop, brooch measuring 3.8cm x 2.8cm, 7.5 grams. **£80-120**



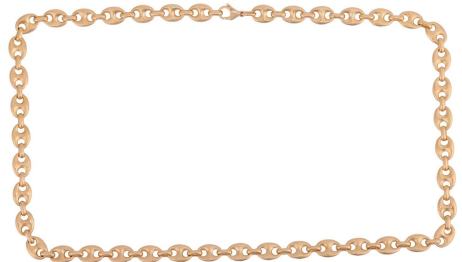
- 59 A pair of cufflinks inset with 1/10oz Krugerrands, set in a yellow metal square frame stamped 9ct, G375, with toggle fittings, measures 2.0 cm across, 14.35 grams. **£600-800**



- 60 A carnelian bead necklace, comprising an array of faceted banded agate beads, sizes graduating from 20.0 to 11.6 mm, to a magnetic clasp, overall length 52.2 cm, 111.5 grams. **£150-250**



- 61 A long heavy anchor link chain, fastened with lobster clasp, marked as '750', link width 8.9 mm, overall measuring 60.5 cm in length, total weight of item 95.63 grams. **£5,000-8,000**



Jewellery, Watches, Coins & Silver, 2nd Jan, 2026 13:00

- 62 A coral brooch and a sagittarius enamel charm; the brooch collet-set with a round coral cabochon of 11.0mm, in a scalloped surround with a pin-struck border, further to a bevelled bow-shaped mount, later-added gilt brooch fittings, mount testing as 9ct, 2.8cm wide; circular charm with enamelled design, in yellow metal stamped '750'; total weight of items 5.3 grams. (2). **£100-150**



- 63 A single-row cultured pearl necklace, comprising a row of 5.3 mm round cultured pearls, flanking 6.4 mm pearl spacers and metal roundelles, completed with a fluted ball clasp in yellow metal marked '9ct', overall length 42.0 cm, in a Christopher Milton Stevens case, 16.8 grams. **£50-80**



- 64 A carved agate cameo ring, depicting the side profile of Socrates, in a conforming mount leading to a D-profile shank, the brushed finish yellow metal surface testing as 18ct, ring head 1.8 x 1.4 cm, size M, 6.5 grams. **£300-500**



- 65 An 1853 United States of America one dollar gold coin, Liberty head to the left, suspended from a bar brooch fitting marked '333', 2.3 grams. **£200-300**



- 66 A group of three diamond-set bracelets and a single earring; the largest bracelet consisting of flexible links illusion-set with diamonds, in white metal stamped '925', another formed of interlinked hexagonal links, each set with diamonds in hallmarked sterling silver, the next with elongated links channel-set with diamonds and interspersed with cross-motif stations, in white metal stamped '925' and a single earring of half-hoop form, set with diamond highlights in unmarked white metal with yellow metal highlights, omega clip fittings; combined weight of items 58.0 grams. (4). **£200-300**



Jewellery, Watches, Coins & Silver, 2nd Jan, 2026 13:00

- 67 A quantity of mid-century and vintage costume jewellery items; to include examples with rhinestone and enamel, floral and giardinetti motif brooches, a polychromatic harlequin key, a large round hawk's eye brooch etc. **£80-120**



- 68 A small collection of jewellery, to include two namesake white metal curb-link bracelets, marked 'ITALY' and '925', one weighing 67.5 grams, the other weighing 70.0 grams; A gem-set gilt-metal toggle pendant, a gilt-metal aeroplane stick pin, a small quantity of other gilt-metal charms and pendants, as well as a gilt-metal bracelet and others. Total weight of all items 172.0 grams. **£350-450**



- 69 Hermès - a pair of Pegasus clip-on earrings, of round button form with applied pegasus motifs, clip-on fittings to the back, gilt, 2.5 cm wide; together with two scarf rings, including a silver-tone plated 'Regate' scarf ring, and another of yellow-tone hook design; both sharing one case. (3)
No papers. **£100-200**



- 70 A large quantity of jewellery and other boxes, some branded, including examples by Carrington, Mappin and Webb, Goldsmiths and Silversmiths and J W Benson. (65) **£200-300**



- 71 A quantity of vintage and antique costume jewellery; to include an oval glazed portrait locket stamped "9ct" 2.5 grams, a pair of faux pearl drop earrings with chain and shepherd hook fittings surface testing as 14ct, a silver ring set with rubies and white pastes, a wedgewood plaque pendant in a silver mount and a quantity of vintage and retro brooches, as well as beaded necklaces, to include coral and aventurine examples. **£200-300**



Jewellery, Watches, Coins & Silver, 2nd Jan, 2026 13:00

- 72 A citrine dress ring, centred with an octagonal step-cut citrine of 13.4mm x 9.9mm x 6.2mm, in a claw setting in a conforming surround, in unmarked pink metal surface testing as 14ct, size Q, 4.8 grams. **£100-150**



- 73 A small collection of rings; to include two carved nephrite bands and a carved jadeite band, four stacking rings of twisted chain design, a domed and textured dress ring, a wire bombe ring, and a broken carved shell band. (10) **£80-120**



- 74 A mixed group of jewellery items including a pearl-set silver bracelet, of organic design, signed 'Hagrit', together with a large labradorite-set silver necklace, a lapis lazuli-set pendant with matching bracelet and earrings, a small group of labradorite-set items and other silver jewellery items; 255.9 grams (15) **£200-300**



- 75 A boxed lapis lazuli necklace and earrings suite, set with graduated polished lapis lazuli panels in hinged white metal mounts, completed by a box clasp; with a matching pair of stud earrings; together with a pair of ruby cabochon and rose-cut diamond drop earrings, with post and butterfly fittings, surface testing as silver and 18ct, 4.0 cm drop. (3)
Please note: Unless otherwise stated, lots have been tested using an electronic tester. This is a surface test only and is not a guarantee of metal purity. **£150-250**



- 76 A Roman carnelian intaglio ring, the oval cabochon with engravings depicting Mercury, caduceus in one hand and a moneybag on the other, to a later mount and shank, unmarked yellow metal surface testing as 18ct, ring head 12.3 x 9.4 mm, size O, 4.8 grams. **£350-450**



Jewellery, Watches, Coins & Silver, 2nd Jan, 2026 13:00

- 77 A Tiffany & Co. loving heart necklace by Paloma Picasso, marked '925' with maker's marks, together with a white metal oval link necklace with heart pendant, marked '925'; 15.0 grams (2) **£80-120**



- 78 Two rings; comprising a diamond-set crossover ring, in an 18ct yellow gold mount, size L 1/2, together with a diamond-set five-stone ring, in an 18ct yellow gold mount, size M; 5.5 grams (2) **£300-500**



- 79 A two-tone interlocking dress ring, comprising two interlocking rings of yellow and white metal bands with widening central detail, the yellow metal band marked '18K' and the white metal band surface testing as 18ct, size O 1/2, 5.0 grams. **£200-300**



- 80 A curb link bracelet, completed with a conforming clasp with safety catch, yellow metal stamped '18ct', 21.5 cm long, 41.31 grams. **£2,000-3,000**



- 81 A coral cabochon dress ring, set to the middle with an oval corallium rubrum cabochon of 12.3mm x 10.1mm x 4.4mm, in a claw mount with brickwork texture, leading to a flat shank, yellow metal marked '333', size P, 3.6 grams. **£200-300**



Jewellery, Watches, Coins & Silver, 2nd Jan, 2026 13:00

- 82 An engraved floral band ring in 9ct yellow gold, Birmingham assay marks, size Q, 5.9 grams. **£100-150**



- 83 A 9ct yellow gold clip, composed of a bar of faceted design, hallmarked London, 1968, together with a gem-set ring in 9ct yellow gold, size L1/2; 17.9 grams **£400-600**



- 84 A small group of jewellery items comprising a pair of paste-set buckle brooch conversions, a faux pearl single-strand necklace, a blue paste brooch, and an imitation amber bead necklace; 176.3 grams **£100-150**



- 85 Two 22ct yellow gold wedding bands, of plain polished finish, court-profile, one in size M and the other size S; total weight of items 4.3 grams. (2) **£200-300**



- 86 A small group of jewellery items, comprising a Victorian carnelian-set ring in 9ct gold, size H1/2, a carnelian-set signet ring in 9ct gold, size R, a cameo-set ring in 9ct gold, size P, a synthetic ruby and diamond-set dress ring in bi-colour metal marked '18ct and Plat', size M, a yellow metal gate link bracelet with heart padlock marked '9ct', and a gilt hinged bangle; total weighable: 23.8 grams (6) **£300-500**



Jewellery, Watches, Coins & Silver, 2nd Jan, 2026 13:00

- 87 A pair of oval cufflinks; the hollow plaques with traces of an 18 carat mark (one chain link broken) 6.5 grams; a single stone aquamarine bar brooch, two Victorian stick pins, a Victorian swivel seal, a small gilt metal desk seal, two 9 carat gold wristwatches and a small quantity of other gilt metal jewellery in a leather jewellery case. **£300-500**



- 88 A 9ct gold ingot pendant, bearing display marks, Sheffield 1978, sponsor's mark 'RC' in hexagonal cartouche, with suspension loop, 5.0 cm drop, 30.0 grams. **£700-900**



- 89 A large collection of jewellery items, the majority signed costume jewellery, including examples by Kenneth Lane, Sandor & Co, Weiss, Catherine Popesco, Nettie Rosenstein, Kramer of New York, Hattie Carnegie and others, together with mosaic jewellery items, and a quantity of stick pins **£300-500**



- 90 A small collection of jewellery, to include a black resin locket with central seed pearl and turquoise cluster, the back featuring a vacant hinged compartment, to a gold-plated textured cable-link chain, 6.0cm in length; A smoky quartz dress ring, featuring an oval-cut smoky quartz, to stylised foliate shoulders and a plain ring shank, in gilt-metal, size L 1/2; A blue paste ring, featuring a collet-set cushion-shaped blue paste, to a floral border, in yellow metal marked '585', size F, 2.5 grams; Along with other items such as a gold-plated chain and pendant, a seed pearl brooch and a gem-set ring. Total weight of items 60.5 grams **£200-300**



- 91 A bi-coloured 'Jubilee'-style ring, stamped '585' and testing as 14 carat gold. Size N, 1.8 grams.
Please note: Unless otherwise stated, lots have been tested using an electronic tester. This is a surface test only and is not a guarantee of metal purity. **£200-300**



Jewellery, Watches, Coins & Silver, 2nd Jan, 2026 13:00

- 92 Two wedding bands; one stamped 'PLAT' in size P½, 2.5 grams; another band with rubbed British hallmarks, surface testing as 18ct, size R, 1.9 grams. **£100-150**



- 93 A probably Balkan/Ottoman embossed and woven silver Kollan belt with an adjustable hook buckle, overall 97cm long, 155.5 grams (5ozt) gross. **£150-250**



- 94 A group of four Cartier jewellery boxes, and a Must de Cartier perfume exterior box. (5) **£150-250**



- 95 A group of jewellery items and a silver cigarette case; The cigarette case of curved form, with foliate and scrolled engraved detail and a vacant central cartouche, gilt interior, London hallmarks dated 1906, 8.0cm x 6.0cm, 60.5 grams; Together with a small collection of jewellery comprising a purple paste and seed pearl brooch, of scalloped oval form, in white metal marked '995' with pin and C clasp fittings, 2.0cm x 1.6cm; An amethyst cocktail ring, featuring an oval-cut amethyst, to a white metal ring shank surface testing as base metal, size R 1/2; A green tourmaline trilogy ring, featuring three graduating rectangular-cut green tourmalines, claw set in a base metal shank, size M; And other, such as a pair of amethyst ear studs, a blue topaz bracelet along with other earrings and rings. **£250-350**



Jewellery, Watches, Coins & Silver, 2nd Jan, 2026 13:00

- 96 A quantity of white metal and costume jewellery; to include a cultured pearl necklace with clasp stamped "silver", boxed, a freshwater pearl necklace with enamelled bead accent, and several other faux pearl necklaces, together with a turquoise bead necklace, a chain bracelet with padlock clasp stamped "silver" and several paste-set rings and earrings in white and base metal. **£100-150**



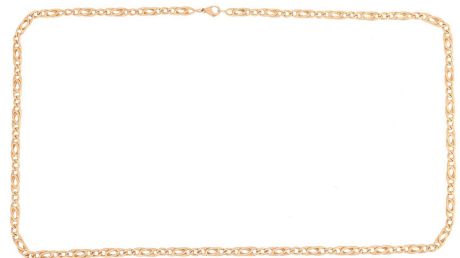
- 97 A pair of octagonal panel cufflinks set with onyx and cultured pearl, toggle back, stamped 'K18 GF' for gold-filled. **£100-200**



- 98 A group of jewellery, to include a white metal open bangle with chevron detail, 3.0cm wide; a tiger's eye bead necklace 70.0cm in length; a coral bead necklace 74.0cm in length; along with other base metal items such as a white metal fringe necklace, a white metal filigree locket on chain, a white metal snake brooch and other examples of bracelets, a bangle, brooches, and rings. Total weight of all items 310.0 grams **£150-250**



- 99 A fancy curb link necklace, completed with a lobster clasp, yellow metal stamped '750', overall length 67.0 cm, 32.16 grams. **£1,500-2,000**



- 100 A jadeite-set dress ring, composed of an oval-cut jadeite cabochon, in a four-prong setting, to a yellow metal shank surface tested as 18ct gold, size L; 3.6 grams. **£250-350**



Jewellery, Watches, Coins & Silver, 2nd Jan, 2026 13:00

- 101 A long twisted rope necklace, completed with a spring-ring clasp, yellow metal stamped with Italian registration mark and '750', overall length 81.0cm, 20.62 grams. **£1,000-1,500**



- 102 Two 9ct gold hinged bangles; to include a bracelet of hollow twisted rope design, fastens with a tongue clasp, 6.1 cm inner diameter; and another one with a stylised laureate pattern design, tension closure, 6.1 cm inner diameter; both bearing British convention marks, total weight of items 10.0 grams. (2) **£200-300**



- 104 A small group of jewellery; the first piece a cameo brooch, featuring a lady with curled hair, to a yellow metal mount marked '9ct', with locking C clasp and pin fitting; The second piece a yellow paste cocktail ring (distressed), featuring an oval-cut yellow paste in a yellow metal bezel setting, to a yellow metal ring shank marked '9ct' size P; The third a 9ct yellow gold aquamarine cabochon ring, detailed with twisted wire border, size Q; The fourth an Art Deco gilt necklace, featuring five square-cut purple pastes, with shield motif decoration, to a cable-link gilt-metal chain, 41.5cm in length. Total weight of all items 31.0 grams (4). **£200-300**



- 105 An anchor link bracelet, fastened with lobster clasp, marked as '750', link width 8.6 mm, overall measuring 22.0 cm in length, total weight of item 34.71 grams. **£1,800-2,200**



- 106 An onyx and diamond dress ring, comprising a domed navette-shaped onyx cabochon, between diamond-set shoulders leading to a tapering shank, yellow metal stamped '18ct', size L½, 4.6 grams. **£200-300**



Jewellery, Watches, Coins & Silver, 2nd Jan, 2026 13:00

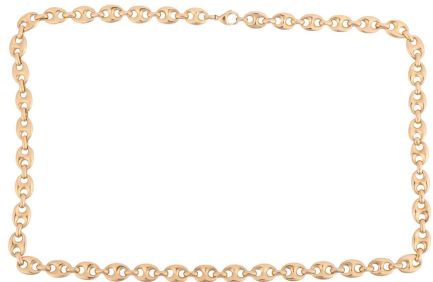
- 107 Four gem-set rings; to include a synthetic colour-change sapphire dress ring between bifurcated shoulders, yellow metal testing as 14ct, size O; a circular-cut garnet dress ring in white metal stamped '9ct', size P½; a sapphire and diamond half hoop ring in white metal testing as 9ct, size P; and a CZ half hoop ring in gilt metal; (4). Total weighable 14.4 grams. **£300-500**



- 108 A small group of jewellery items comprising a 9ct gold gate link bracelet with heart padlock, an opal-set ring in a yellow metal mount surface tested as 9ct gold, size N, a synthetic ruby ring, in a yellow metal mount marked '14K', size M, an amber-set pendant and matching earrings, in yellow metal mounts marked '375', and other jewellery items; total weighable: 27.8 grams. **£300-500**



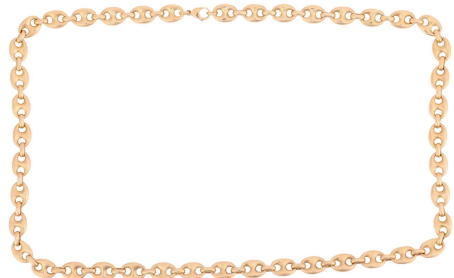
- 109 A long heavy anchor link chain, fastened with lobster clasp, marked as '750', link width 8.8 mm, overall measuring 60.0 cm in length, total weight of item 96.77 grams. **£5,000-8,000**



- 110 Two rings; comprising a diamond channel-set half eternity ring, in unmarked yellow metal surface tested as 9ct gold, size L1/2 with sizing beads, and a 9ct yellow gold sapphire-set half hoop ring, size P1/2; 4.3 grams (2). **£150-250**



- 111 A long heavy anchor link chain, fastened with lobster clasp, marked as '750', link width 8.9 mm, overall measuring 61.5 cm in length, total weight of item 95.37 grams. **£5,000-8,000**



Jewellery, Watches, Coins & Silver, 2nd Jan, 2026 13:00

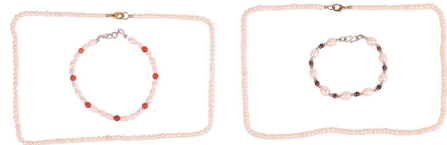
- 112 A Gucci ghost skull silver pendant on chain, a Montblanc open bangle, and a pair of cufflinks; the skull pendant with black enamel details, on a flat curb link chain, signed and Swiss hallmarked; the Montblanc open bangle of braided design, signed and marked '925', 6.6 cm wide; and a pair of Montblanc cufflinks set with blue lace agate cabochons, stamped 'Steel'; total weighable 60.0 grams. (2) **£100-200**



- 113 A small group of jewellery; The first a 9ct yellow gold band ring with chevron engraving, size L, 1.5 grams; The second a 9ct gold plain signet ring (exhibiting signs of repair), size O, 2.0 grams; The third a heavy gauge 9ct plain band ring of D profile, size T, 7.5 grams; The fourth a pair of gold-plated opal stud earrings, 0.5 grams. (4). **£250-350**



- 114 A small group of pearl jewellery items, comprising a coral and cultured pearl bracelet, a pearl and bead bracelet and two cultured pearl necklaces; 57.7 grams (4). **£100-150**



- 115 A double row of slightly graduated cultured pearls to a diamond set clasp marked '9ct', together with a single row of uniform size cultured pearls, to a spherical clasp marked '375'; a freshwater pearl, hematite and gold bead necklace; a yellow metal and moss agate dress ring, a gold plated Rotary wristwatch and a small quantity of other jewellery. **£200-300**



- 116 † A collection of loose gemstones; to include opal cabochons, oval-cut sapphires, square step-cut emeralds, rubies and amethysts. **£300-500**



Jewellery, Watches, Coins & Silver, 2nd Jan, 2026 13:00

117

Rado - Centrix White Ceramic & Stainless Steel Wristwatch

Reference: 111.0936.3

Serial: 14203635

Year: Contemporary

Bezel: Diamond-Set

Case Material: Stainless Steel

Case Diameter: Approximately 28mm

Dial: White

Numerals: Gem-Set

Crown: Signed

Movement: ETA 956.112 Seven-Jewel Quartz Movement

Complication: Date Aperture at three o'clock

Strap: Integral White Ceramic and Stainless Steel Strap

Inner Circumference: Approximately 14.0cm

Buckle: Signed, Stainless Steel & Titanium Push-Button Fold-Over Clasp, marked '04679'

Box: No

Papers: No

Gross Weight: Approximately 59.5 grams

No long-term tests have been performed and accuracy cannot be guaranteed. A full service is advised on all watches and pocket watches once purchased.

It is also important to note that we cannot guarantee the authenticity or originality of individual components, such as wheels, hands, crowns, crystals, screws, bracelets, and wrist bands, since subsequent repairs and restoration may have changed the original components. Also, we cannot guarantee the authenticity or originality of any engraving or re-engraving on watch cases, case backs, bracelets, straps or internal movements. **£100-200**



Jewellery, Watches, Coins & Silver, 2nd Jan, 2026 13:00

118

Omega - A Gold-Plated Constellation Electronic

Reference: 198.002

Serial: 34216101

Year: Purchased 1981

Bezel: Smooth

Case Material: Gold-Plated Stainless Steel

Case Diameter: Approximately 36mm

Dial: Gold-Tone, Pointed Baton Hands

Numerals: Baton, Minute Track

Crown: Signed

Movement: Omega Calibre 1250 (ESA Calibre 916.2) 12-Jewel Quartz Movement, numbered '62Y2' and '34216101'

Complication: Date Aperture at three o'clock

Strap: After-Market Black Leather Strap

Inner Circumference: Approximately 21.0cm at widest

Buckle: After-Market Gold-Plated Buckle

Box: Yes

Papers: International Guarantee Booklet and Omega Quarts Calibre 1342 Booklet (Unrelated) Only.

Gross Weight: Approximately 52.0 grams

No long-term tests have been performed and accuracy cannot be guaranteed. A full service is advised on all watches and pocket watches once purchased.

It is also important to note that we cannot guarantee the authenticity or originality of individual components, such as wheels, hands, crowns, crystals, screws, bracelets, and wrist bands, since subsequent repairs and restoration may have changed the original components. Also, we cannot guarantee the authenticity or originality of any engraving or re-engraving on watch cases, case backs, bracelets, straps or internal movements. **£100-200**



Jewellery, Watches, Coins & Silver, 2nd Jan, 2026 13:00

119

Garrard - A Gold-Plated Wristwatch

Bezel: Smooth

Case Material: Gold-Plated

Case Diameter: Approximately 36mm x 36mm

Dial: Gold-Tone, Sunburst, Baton Hands

Numerals: Baton, Minute Track

Crown: Fluted

Movement: 25-Jewel Automatic Movement

Complication: Day and Date Aperture at three o'clock

Strap: After-Market Brown Suede Strap

Inner Circumference: Approximately 15.5cm at smallest, 20.0cm at widest

Buckle: After-Market Buckle

Box: No

Papers: No

Gross Weight: Approximately 51.5 grams

Please note this watch has not been opened. The movement has not been checked and therefore cannot be guaranteed. No long-term tests have been performed and accuracy cannot be guaranteed. A full service is advised on all watches and pocket watches once purchased.

It is also important to note that we cannot guarantee the authenticity or originality of individual components, such as wheels, hands, crowns, crystals, screws, bracelets, and wrist bands, since subsequent repairs and restoration may have changed the original components. Also, we cannot guarantee the authenticity or originality of any engraving or re-engraving on watch cases, case backs, bracelets, straps or internal movements. **£80-120**



Jewellery, Watches, Coins & Silver, 2nd Jan, 2026 13:00

120

Maurice Guerdat - A Gold-Plated Wristwatch

Reference: 20263

Bezel: Smooth

Case Material: Gold-Plated

Case Diameter: Approximately 26mm

Dial: Gold-Tone, Sunburst

Numerals: None

Crown: Elgin Fluted Crown

Movement: Automatic

Complication: Date Aperture at three o'clock

Strap: After-Market, Black Leather

Inner Circumference: Approximately 19.5cm at widest

Buckle: After-Market Gold-Plated Buckle

Box: No

Papers: No

Gross Weight: Approximately 30.5 grams

Please note this watch has not been opened. The movement has not been checked and therefore cannot be guaranteed. No long-term tests have been performed and accuracy cannot be guaranteed. A full service is advised on all watches and pocket watches once purchased.

It is also important to note that we cannot guarantee the authenticity or originality of individual components, such as wheels, hands, crowns, crystals, screws, bracelets, and wrist bands, since subsequent repairs and restoration may have changed the original components. Also, we cannot guarantee the authenticity or originality of any engraving or re-engraving on watch cases, case backs, bracelets, straps or internal movements. **£50-100**



Jewellery, Watches, Coins & Silver, 2nd Jan, 2026 13:00

121 **Leverette - An '18K' Watch Case**

Reference: 540

Serial: 583

Bezel: Deficient

Case Material: '18K' (Crystal Deficient)

Case Diameter: Approximately 34mm

Dial: Linear Texture (Significantly Discoloured, Significant Debris), Hands Deficient

Numerals: Baton (Some Deficient)

Crown: Deficient

Movement: Leverette (ETA Calibre 1120) 17-Jewel Manual Wind Movement

Complication: Seconds Subsidiary Dial at six o'clock (Hand Warped)

Strap: Deficient

Buckle: Deficient

Box: No

Papers: No

Gross Weight: Approximately 25.5 grams

No long-term tests have been performed and accuracy cannot be guaranteed. A full service is advised on all watches and pocket watches once purchased.

It is also important to note that we cannot guarantee the authenticity or originality of individual components, such as wheels, hands, crowns, crystals, screws, bracelets, and wrist bands, since subsequent repairs and restoration may have changed the original components. Also, we cannot guarantee the authenticity or originality of any engraving or re-engraving on watch cases, case backs, bracelets, straps or internal movements. **£800-1,200**



Jewellery, Watches, Coins & Silver, 2nd Jan, 2026 13:00

- 122 A group of five watches; The first a Longines gold-filled watch, reference 9899520, the 14mm x 22mm case enclosing a white dial with gilt Arabic numerals, manual wind movement, to a gold-filled strap, currently running, 12.5 grams; The second a Lorus gold-plated watch, reference V824-0010, the 26mm case enclosing a white dial with black Roman numerals, quartz movement, to a brown leather strap, not running, 19.0 grams; The third a stainless steel Omega Seamaster watch, reference 2759-6 / 2761, the 34mm case enclosing a silvered dial (discoloured) with Arabic and Baton numerals, Omega calibre 410 17-Jewel manual wind movement numbered '14933216', to a green and red nato strap, currently running, 32.5 grams; The fourth an Omega '18K' watch, reference 2510, serial 10856908, the 20mm case enclosing a brushed silvered dial with Arabic and Baton numerals, Omega calibre R13.5 15-Jewel manual wind movement numbered '11331148', to an integral mesh strap with a fold-over clasp marked '750', currently running, 30.5 grams; The fifth a Gucci dress watch, reference 6800L, the 15mm x 22mm stainless steel case enclosing a black textured dial with one baton numeral at six o'clock, quartz movement, to a curved wooden strap, not running, 33.0 grams



collection of five vintage watches to include a gold Omega, a vintage omega on replacement strap, a gold Longines watch, a Gucci watch and a Lorus watch

No long-term tests have been performed and accuracy cannot be guaranteed. A full service is advised on all watches and pocket watches once purchased.

It is also important to note that we cannot guarantee the authenticity or originality of individual components, such as wheels, hands, crowns, crystals, screws, bracelets, and wrist bands, since subsequent repairs and restoration may have changed the original components. Also, we cannot guarantee the authenticity or originality of any engraving or re-engraving on watch cases, case backs, bracelets, straps or internal movements. **£300-500**

Jewellery, Watches, Coins & Silver, 2nd Jan, 2026 13:00

123

Omega - A Lady's Constellation

Reference: 595.1080

Serial: 53887924

Bezel: Smooth, Detailed with Black Enamelled Roman Numerals

Case Material: Stainless Steel

Case Diameter: Approximately 22mm

Dial: Black, Baton Hands

Numerals: Dot, Minute Track

Crown: Signed, Fluted

Movement: Omega Calibre 1455 (ETA 976.001) Six-Jewel Quartz Movement

Strap: Signed, Black Leather with Grey Stitching

Inner Circumference: Approximately 14.5cm at smallest, 17.5cm at widest

Buckle: Signed, Stainless Steel Buckle

Box: No

Papers: No

Gross Weight: Approximately 14.0 grams

No long-term tests have been performed and accuracy cannot be guaranteed. A full service is advised on all watches and pocket watches once purchased.

It is also important to note that we cannot guarantee the authenticity or originality of individual components, such as wheels, hands, crowns, crystals, screws, bracelets, and wrist bands, since subsequent repairs and restoration may have changed the original components. Also, we cannot guarantee the authenticity or originality of any engraving or re-engraving on watch cases, case backs, bracelets, straps or internal movements. **£150-250**



Jewellery, Watches, Coins & Silver, 2nd Jan, 2026 13:00

124

Montblanc - A Nicolas Rieussec Chronograph

Reference: 7138

Serial: PB 249459

Bezel: Smooth

Case Material: Stainless Steel, Exhibition Case Back

Case Diameter: Approximately 40mm

Dial: Grey, Stainless Steel Section to lower half of dial, Luminous and Blued Leaf Hands

Numerals: Black Arabic Numerals, Minute Track

Crown: Signed, Fluted

Movement: Montblanc Calibre MBR 200 40-Jewel Automatic Movement, Adjusted to Five Positions, numbered '102396'.

Complication: Dual Time, 30-Minute Subsidiary Dial at five o'clock, Seconds Subsidiary Dial at seven o'clock, Date Aperture at three o'clock

Strap: Stainless Steel

Inner Circumference: Approximately 19.0cm

Buckle: Signed, Stainless Steel Push Button Double Fold-Over Clasp

Box: Yes

Papers: No. Service Guide Booklet Only.

Gross Weight: Approximately 185.0 grams

No long-term tests have been performed and accuracy cannot be guaranteed. A full service is advised on all watches and pocket watches once purchased.

It is also important to note that we cannot guarantee the authenticity or originality of individual components, such as wheels, hands, crowns, crystals, screws, bracelets, and wrist bands, since subsequent repairs and restoration may have changed the original components. Also, we cannot guarantee the authenticity or originality of any engraving or re-engraving on watch cases, case backs, bracelets, straps or internal movements. **£2,500-3,500**



125

A group of watches and pocket watches; The first a 9ct gold Omega, reference 50967, serial 560962, the 15mm x 15mm case enclosing a silvered dial with gilt Arabic and Baton numerals, Omega calibre 244 17-jewel manual wind movement numbered '13088979', not running and wound tight, to an after-market gold-plated elasticated strap, 18.0 grams; The second a Broadwest gold-plated watch, reference 472745, the 30mm case enclosing a silvered dial with Arabic numerals, with seconds subsidiary dial at six o'clock, 15-jewel manual wind movement, currently running, to a black leather strap and gold-plated buckle 27.0 grams; The third an Elgin white metal open face pocket watch, the 58mm case enclosing a white dial with black Roman numerals, with seconds subsidiary dial at six o'clock, keyless wound movement, currently running, 157.0 grams; The fourth a white metal open face pocket watch, the 58mm case enclosing a white dial with black Roman numerals, with seconds subsidiary dial at six o'clock, case back engraved with 'Ex.B.R. L.N.E.R. 3445 Ex.B.R.' keyless wound movement, currently running, 121.5 grams; A white metal Albert chain, with T Bar, completed at each end with lobster clasps, measuring 44.0cm in length, 20.5 grams. **£200-300**



Jewellery, Watches, Coins & Silver, 2nd Jan, 2026 13:00

- 126 A group of three watches; The first a Movado wristwatch, reference 84-40-881A, with 22mm case, black dial and gold-tone dauphine hands, no numerals, integral strap, signed push-button release clasp, inner circumference approximately 17.25cm, quartz movement; The second a Girard-Perregaux stainless steel wristwatch, 20mmx 22mm case, enclosing a gold-tone dial with gem-set numerals, integral strap, fold-over clasp, quartz movement; The third a Tian Harlan wristwatch, 28mm case, enclosing a rainbow segmented dial with central black indicator, ASST seventeen jewel manual wind movement, black fabric strap; Gross weight of all pieces approximately 107.0 grams (3).



No long-term tests have been performed and accuracy cannot be guaranteed. A full service is advised on all watches and pocket watches once purchased.

It is also important to note that we cannot guarantee the authenticity or originality of individual components, such as wheels, hands, crowns, crystals, screws, bracelets, and wrist bands, since subsequent repairs and restoration may have changed the original components. Also, we cannot guarantee the authenticity or originality of any engraving or re-engraving on watch cases, case backs, bracelets, straps or internal movements. **£100-200**

- 127 **Roamer - A Lady's Diamond-set Dress Watch**

Reference: 651953

Serial: 40/4

Year: Purchased 2005

Bezel: Smooth, Diamond-set

Case Material: Stainless Steel

Case Diameter: Approximately 18mm x 20mm

Dial: Silvered, Dauphine Hands

Numerals: Roman at Twelve, Three, Six and Nine o'clock

Movement: 15A 275 Quartz Movement

Strap: Integral Stainless Steel Annular-Link Strap

Inner Circumference: Approximately 18.5cm at widest

Buckle: Signed, Stainless Steel Fold-Over Clasp

Box: Yes

Papers: International Guarantee Booklet and Diamond Certificate Card Only.

Gross Weight: Approximately 55.1 grams

Please note this watch has not been opened. The movement has not been checked and therefore cannot be guaranteed.

No long-term tests have been performed and accuracy cannot be guaranteed. A full service is advised on all watches and pocket watches once purchased.

It is also important to note that we cannot guarantee the authenticity or originality of individual components, such as wheels, hands, crowns, crystals, screws, bracelets, and wrist bands, since subsequent repairs and restoration may have changed the original components. Also, we cannot guarantee the authenticity or originality of any engraving or re-engraving on watch cases, case backs, bracelets, straps or internal movements. **£150-250**



Jewellery, Watches, Coins & Silver, 2nd Jan, 2026 13:00

128

Gucci - A Diamond-set 'G' Wristwatch

Reference: 125.4 (Case Back marked internally '2459' and '07/13')

Serial: 4211020

Year: circa 2000

Bezel: Diamond-Set, 'G' Shaped

Case Material: Stainless Steel

Case Diameter: Approximately 31mm x 28mm

Dial: Black

Numerals: Gem-Ste at Twelve, Six and Nine o'clock

Crown: Signed, Fluted

Movement: Gucci (Ronda) Four-Jewel Quartz Movement

Strap: Stainless Steel Brick-Link Strap

Inner Circumference: Approximately 15.0cm

Buckle: Signed, Stainless Steel Double Fold-Over Clasp

Box: No

Papers: No

Gross Weight: Approximately 79.0 grams

No long-term tests have been performed and accuracy cannot be guaranteed. A full service is advised on all watches and pocket watches once purchased.

It is also important to note that we cannot guarantee the authenticity or originality of individual components, such as wheels, hands, crowns, crystals, screws, bracelets, and wrist bands, since subsequent repairs and restoration may have changed the original components. Also, we cannot guarantee the authenticity or originality of any engraving or re-engraving on watch cases, case backs, bracelets, straps or internal movements. **£250-350**



Jewellery, Watches, Coins & Silver, 2nd Jan, 2026 13:00

- 129 **Rado - Centrix Automatic Wristwatch**
Reference: 734.0246.3
Serial: 15105327
Year: Contemporary
Bezel: Smooth
Case Material: Bi-Metal
Case Diameter: Approximately 32mm
Dial: White, Part-Skeletonised
Numerals: Dot
Crown: Signed, Fluted
Movement: Rado (ETA C07.631) 23-Jewel Automatic Movement
Strap: Bi-Metal Strap
Inner Circumference: Approximately 15.0cm
Buckle: Signed, Stainless Steel & Titanium Push-Button Fold-Over Clasp
Box: No
Papers: No
Gross Weight: Approximately 96.0 grams
 No long-term tests have been performed and accuracy cannot be guaranteed. A full service is advised on all watches and pocket watches once purchased.
 It is also important to note that we cannot guarantee the authenticity or originality of individual components, such as wheels, hands, crowns, crystals, screws, bracelets, and wrist bands, since subsequent repairs and restoration may have changed the original components. Also, we cannot guarantee the authenticity or originality of any engraving or re-engraving on watch cases, case backs, bracelets, straps or internal movements. **£200-300**
- 130 Four watches, comprising an early 20th century dress watch, in an 18ct gold case, with brown leather strap, together with a gentleman's Invicta wristwatch, a ladies Rotary dress watch and a Tudor dress watch; 82.9 grams (4) **£150-250**



Jewellery, Watches, Coins & Silver, 2nd Jan, 2026 13:00

131

Norman - A Gem-set Cocktail Watch

Bezel: Smooth, Claw-set with six rubies

Case Material: Rose Metal surface testing as 14ct and 18ct

Case Diameter: Approximately 18mm x 20mm

Dial: Grey, Pointed Baton Hands

Numerals: Gem-Set

Crown: Fluted

Movement: Norman 17-Jewel Manual Wind Movement

Strap: Black Leather Cord Strap

Inner Circumference: Approximately 14.0cm at smallest, 16.0cm at widest

Buckle: Gold-Plated Buckle

Box: No

Papers: No

Gross Weight: Approximately 10.0 grams

No long-term tests have been performed and accuracy cannot be guaranteed. A full service is advised on all watches and pocket watches once purchased.

It is also important to note that we cannot guarantee the authenticity or originality of individual components, such as wheels, hands, crowns, crystals, screws, bracelets, and wrist bands, since subsequent repairs and restoration may have changed the original components. Also, we cannot guarantee the authenticity or originality of any engraving or re-engraving on watch cases, case backs, bracelets, straps or internal movements. **£150-250**



Jewellery, Watches, Coins & Silver, 2nd Jan, 2026 13:00

132

Festina - A Titanium Quartz Chronograph

Reference: 7159-2

Year: Purchased 1998

Bezel: Uni-Directional

Case Material: Titanium

Case Diameter: Approximately 38mm

Dial: Grey, Luminous Pointed Baton Hands

Numerals: Luminous Baton, Minute Track, Tachymeter to Rehaut

Crown: Fluted, Two Chronograph Pushers

Movement: Miyota Calibre 0560 No-Jewel Quartz Movement

Complication: Centre Chronograph Seconds, Date Aperture at three o'clock, Hour Subsidiary Dial at twelve o'clock, 1/12 Second Subsidiary Dial at six o'clock, 12-Hour Subsidiary Dial at nine o'clock.

Strap: Integral Titanium Strap

Inner Circumference: Approximately 19.0cm

Buckle: Signed, Titanium Fold-Over Clasp

Box: Yes

Papers: International Certificate of Guarantee Booklet and Chronograph Instructions Booklet Only.

Gross Weight: Approximately 77.7 grams

Please note this watch has not been opened. The movement has not been checked and therefore cannot be guaranteed. No long-term tests have been performed and accuracy cannot be guaranteed. A full service is advised on all watches and pocket watches once purchased.

It is also important to note that we cannot guarantee the authenticity or originality of individual components, such as wheels, hands, crowns, crystals, screws, bracelets, and wrist bands, since subsequent repairs and restoration may have changed the original components. Also, we cannot guarantee the authenticity or originality of any engraving or re-engraving on watch cases, case backs, bracelets, straps or internal movements. **£150-250**



Jewellery, Watches, Coins & Silver, 2nd Jan, 2026 13:00

- 133 A group of two watches; The first an Ebel automatic gold-plated wristwatch, reference 66, serial 7072901, 20mm case enclosing a silvered brushed dial with pointed baton hands and baton numerals, with an automatic movement, to an after-market Brittanica links stainless steel strap; The second a Zenith Espada wristwatch, reference 59.0250. 267, 28mm case enclosing a gold-tone dial with triangular baton numerals and Arabic numerals at twelve, six and nine o'clock, featuring a date aperture at three o'clock, to an integral stainless steel and -gold-plated strap, with double fold-over clasp, quartz movement with an additional strap link; Accompanied by two unassociated watch strap links; Gross weight of items (excluding additional links) approximately 79.5 grams (2). No long-term tests have been performed and accuracy cannot be guaranteed. A full service is advised on all watches and pocket watches once purchased.



It is also important to note that we cannot guarantee the authenticity or originality of individual components, such as wheels, hands, crowns, crystals, screws, bracelets, and wrist bands, since subsequent repairs and restoration may have changed the original components. Also, we cannot guarantee the authenticity or originality of any engraving or re-engraving on watch cases, case backs, bracelets, straps or internal movements. **£150-250**

- 134 **Tissot - Le Locle Powermatic 80 Wristwatch**
Reference: T006407B
Serial: VJF.84Y.54S
Year: Contemporary
Bezel: Smooth
Case Material: Stainless Steel
Case Diameter: Approximately 38mm
Dial: Silvered, Textured Centre and Outer Dial
Numerals: Black Roman Numerals, Minute Track
Crown: Signed, Fluted
Movement: Tissot (ETA AW05) 23-Jewel Automatic Movement



Strap: Stainless Steel Brick-Link Strap
Inner Circumference: Approximately 17.0cm
Buckle: Signed, Stainless Steel Push-Button Double Fold-Over Clasp, marked 'L264' and 'STM-UA'.
Box: No
Papers: No
Gross Weight: Approximately 114.5 grams
No long-term tests have been performed and accuracy cannot be guaranteed. A full service is advised on all watches and pocket watches once purchased.

It is also important to note that we cannot guarantee the authenticity or originality of individual components, such as wheels, hands, crowns, crystals, screws, bracelets, and wrist bands, since subsequent repairs and restoration may have changed the original components. Also, we cannot guarantee the authenticity or originality of any engraving or re-engraving on watch cases, case backs, bracelets, straps or internal movements. **£100-200**

Jewellery, Watches, Coins & Silver, 2nd Jan, 2026 13:00

- 135 Must de Cartier - A gilt metal photo frame, of oval shape, in blue with golden speckles imitating lapis lazuli, resting on hinged C brackets, signed, 9.0cm x 7.0cm. Cased. No papers. **£100-150**



- 136 A group lot of silver and decorative items; to include, a pair of Tiffany & Co. silver and carnelian cufflinks in pouch, a Tiffany folding silver picture frame with pouch and box, a pair of Asprey salt and pepper mills, an Asprey card holder, and a Must de Cartier card holder with box and pouch, two Limoges ceramic trinket boxes together with other decorative items. **£150-250**



- 137 A Hermes of Paris, 8-day travel alarm clock, of architectural form with gilt brass body and faux tortoise shell effect panels, the oval Arabic dial with luminous alarm indicator. **£200-300**



- 138 A small group of items comprising a Must de Cartier blue enamel picture frame in a branded box, an Asprey travel clock in a branded box, and a Cartier travel clock (broken stand). (3). **£120-180**



- 139 A "Mid Century Vintage" Omega Rocket Line clock with electro-mechanical solenoid movement and green marble effect counterweighted body, 13 cm long. **£200-300**



Jewellery, Watches, Coins & Silver, 2nd Jan, 2026 13:00

- 140 Dunhill Unique 'Sports' lighter, brass-plated finish, signed 'Alfred Dunhill', numbered, no box, 6.0 cm tall. **£100-200**



- 141 Dunhill Unique 'Tin Can' lighter, silver-plated on brass, signed and numbered, no box, 6.5 cm tall. **£50-80**



- 142 Dunhill Unique 'Sports' lighter, silver-plated on brass, signed 'Alfred Dunhill', numbered, no box, 6.0 cm tall. **£100-200**



- 143 An S.T. Dupont gold-plated lighter with cross-hatched patterns, cover with vacant square catouche, signed and bearing French assay marks. **£80-120**



- 144 A gold-plated Dupont vintage gas lighter, signed and cased in presentation box. **£50-100**



Jewellery, Watches, Coins & Silver, 2nd Jan, 2026 13:00

- 145 Cartier - two gold-plated lighters, one of grooved design, the other with crosshatch finish, signed and numbered. (2) **£100-200**



- 146 A presentation boxed Montblanc Johan Sebastian Bach limited edition ballpoint pen, 3119/8000 and bearing the composer's faux signature, and accompanied with faux musical manuscript and product booklet. **£200-300**



- 147 A pair of Tiffany & Co. T-clip ballpen and mechanical pencil, marked '925' and individually cased in associated pouch and box; together with a cased Must de Cartier Stylo ballpen. (3) **£150-250**



- 148 A group of vintage fountain pens, including a Parker (Canada) 5-16 "Big Red" Duofold, "Lucky Curve", National Security green "cracked ice" fountain pen, a Mabie Todd & Co "Mosaic" leverless fountain pen and other pens and fountain pens. **£100-200**



- 149 A group of vintage fountain pens including, a Parker (Canada) 5-16 "Big Red" Duofold, fountain pen, a George Parker 1930s "Duofold" green celluloid fountain pen, a Parker "Victory" fountain pen, a Mabie Todd & Co "Swan" red marbled fountain pen and others. **£100-200**



Jewellery, Watches, Coins & Silver, 2nd Jan, 2026 13:00

- 150 A presentation boxed Montblanc F. Scott Fitzgerald Limited Edition 09226/18500 fountain pen, the cap bearing a faux signature of F. Scott Fitzgerald, in a simulated book form box. **£200-300**



- 151 A group of vintage fountain pens, including a Parker "Vaccumatic" green pearly fountain pen, a Parker black "Herringbone" fountain pen and other fountain pens and pens. **£100-200**



- 152 A set of four Victorian Elkington & Co of Birmingham EPNS table candlesticks of George II style with removable drip pans, double knopped columns and moulded and loaded bases, 26.5 cm overall height table **£200-300**



- 153 A pair of 20th-century three-sconce silver on copper candelabra on spreading beaded bases. 30 cm wide. **£150-250**



- 154 A Tiffany & Co. silver handled cake slice with monogrammed Art Deco handle, a continental white metal cream jug and a French silver two handled sucrier. 10.08 oz/ 313.7 grams combined weight of weighable silver **£200-300**



Jewellery, Watches, Coins & Silver, 2nd Jan, 2026 13:00

- 155 A small group of silver items, including a pair of George I style "Bun Peppers", London 1918 by Harry Freeman, together with four napkin rings, a millenium caddy spoon and a fiddle pattern sauce ladle. (8) 11.8 ozt/ 344.6 grams gross weight **£150-200**



- 156 A group of silver items, including silver vesta cases, napkin rings and a silver mesh evening purse, 1950s Bulova 30 jewel automatic gentleman's wristwatch, together with five silver napkin rings, collar bars, dress set and other items, 8.52 ozt/ 265 grams combined weight of weighable silver **£150-250**



- 157 A collection of eight figural vestas, comprising an owl, an orange segment, a bison, a walrus, a boxer, a horse, a clown and a dog, in base metal (8) **£150-250**



- 158 A large 20th-century Asprey & Co Neo Classical silver fronted easel photograph frame with tied ribbon detail, 36 cm high x 26 cm wide. together with other 20th-century easel, photograph frames. **£300-400**



- 159 A collection of gentlemen's accessories and stick pins, including a cased fox and hunting motif stick pin (tests as 14 carat gold), a single stone pearl stick pin in the form of a floral sprig, a sterling silver riding crop hunting pin, several unusual stud boxes and cases, button boxes and a top hat pin cushion. Please note: Unless otherwise stated, lots have been tested using an electronic tester. This is a surface test only and is not a guarantee of metal purity. **£150-250**



Jewellery, Watches, Coins & Silver, 2nd Jan, 2026 13:00

- 160 A collection of nine designer silk ties; including three Yves Saint Laurent patterned ties, two Hermes, a Donna Karan, one from Ermenegildo Zegna, one Sonia Rykiel, and a Giorgio Armani. (9) **£80-120**



- 161 A pair of lady's kid leather evening gloves; together collection of antique and vintage accessories, including beaded bags and shell purses, a quantity of hat pins and feathered head pieces. **£80-100**



- 162 Joseph Cheret. A pewter chamberstick, with figural mask carrying handle and oval-shaped dish, the nozzle supported by a cast cherub. 15.5cm high x 18cm wide. Signed and numbered; 'Joseph Cheret' and with a foundry mark 'Soleau Paris 1894.' **£150-250**



Jewellery, Watches, Coins & Silver, 2nd Jan, 2026 13:00

163

Gucci - Lady's Wristwatch

Reference: 6000.2.L

Bezel: Smooth

Year: 1990s

Case Material: Electroplated Stainless Steel

Case Diameter: Approximately 22mm

Dial: Gold-Tone, Dauphine Hands

Numerals: Black Roman Numerals

Crown: Signed, Fluted

Movement: Gucci-1 (ETA Calibre 980.003) Seven-Jewel

Quartz Movement

Strap: After-Market Brown Leather Strap

Inner Circumference: Approximately 17.0cm at smallest,
20.5cm at widest

Buckle: After-Market Gold-Plated Buckle

Box: No

Papers: No

Gross Weight: Approximately 16.0 grams

No long-term tests have been performed and accuracy cannot be guaranteed. A full service is advised on all watches and pocket watches once purchased.

It is also important to note that we cannot guarantee the authenticity or originality of individual components, such as wheels, hands, crowns, crystals, screws, bracelets, and wrist bands, since subsequent repairs and restoration may have changed the original components. Also, we cannot guarantee the authenticity or originality of any engraving or re-engraving on watch cases, case backs, bracelets, straps or internal movements. **£200-300**



Jewellery, Watches, Coins & Silver, 2nd Jan, 2026 13:00

164

Omega - A Lady's 9ct Gold Dress Watch

Reference: 52964

Serial: 365191

Year: Hallmarked Birmingham 1950

Bezel: Smooth

Case Material: 9ct Yellow Gold

Case Diameter: Approximately 15mm x 21mm

Dial: Silvered, Leaf Hands

Numerals: Arabic, Baton at Twelve, Three, Six & Nine o'clock

Crown: Fluted

Movement: Manual Wind

Strap: Black Cord & Leather Strap

Inner Circumference: Approximately 15.5cm at smallest, 18.5cm at widest

Buckle: Gold-Plated Buckle

Box: No

Papers: No

Gross Weight: Approximately 13.5 grams

Please note this watch has not been opened. The movement has not been checked and therefore cannot be guaranteed. No long-term tests have been performed and accuracy cannot be guaranteed. A full service is advised on all watches and pocket watches once purchased.

It is also important to note that we cannot guarantee the authenticity or originality of individual components, such as wheels, hands, crowns, crystals, screws, bracelets, and wrist bands, since subsequent repairs and restoration may have changed the original components. Also, we cannot guarantee the authenticity or originality of any engraving or re-engraving on watch cases, case backs, bracelets, straps or internal movements. **£100-200**



Jewellery, Watches, Coins & Silver, 2nd Jan, 2026 13:00

165

Bremont - An Arrow Wristwatch

Reference: Arrow R-S

Serial: 51411

Year: Purchased 2021

Bezel: Smooth

Case Material: Stainless Steel

Case Diameter: Approximately 42mm

Dial: Black, Luminous Baton Hands

Numerals: Arabic, Minute Track

Crown: Signed, Fluted, One Chronograph Pusher

Movement: BE-51AE 27-Jewel Automatic Movement

Complication: Chronograph Centre Seconds, Date Aperture at six o'clock, 30-Minute Subsidiary Dial at three o'clock, Seconds Subsidiary Dial at nine o'clock

Strap: Nato Grey Striped Strap

Inner Circumference: Approximately 16cm at smallest, 26cm at widest

Buckle: Signed Stainless Steel Buckle

Box: Travel Case and Blue Leather Pouch with Outer Box Only.

Papers: International Warranty Booklet, Warranty Registration Card, Chronometers Booklet, ISO 3159 Test Certificate Only.

Gross Weight: Approximately 121.0 grams

No long-term tests have been performed and accuracy cannot be guaranteed. A full service is advised on all watches and pocket watches once purchased.

It is also important to note that we cannot guarantee the authenticity or originality of individual components, such as wheels, hands, crowns, crystals, screws, bracelets, and wrist bands, since subsequent repairs and restoration may have changed the original components. Also, we cannot guarantee the authenticity or originality of any engraving or re-engraving on watch cases, case backs, bracelets, straps or internal movements. **£500-700**



Jewellery, Watches, Coins & Silver, 2nd Jan, 2026 13:00

166

Dietrich - An Organic Time Wristwatch

Reference: OT-3

Serial: 001014757

Year: Contemporary

Bezel: Smooth, Screw-Detail

Case Material: Brushed Steel

Case Diameter: Approximately 45mm x 45mm

Dial: Grey Skeleton Dial with Four Layers, Luminous Hands

Numerals: Baton, Arabic, Minute Track

Crown: Signed, Fluted

Movement: Miyota 21-Jewel Automatic Movement

Complication: Subsidiary Seconds Dial at four o'clock, 24-Hour Counter at ten o'clock

Strap: Black Nylon

Inner Circumference: Approximately 16.0cm at smallest, 22.0cm at widest

Buckle: Coated Stainless Steel Buckle

Box: Yes

Papers: Guarantee Card (Unsigned) and Information Booklet Only.

Gross Weight: Approximately 130.0 grams

No long-term tests have been performed and accuracy cannot be guaranteed. A full service is advised on all watches and pocket watches once purchased.

It is also important to note that we cannot guarantee the authenticity or originality of individual components, such as wheels, hands, crowns, crystals, screws, bracelets, and wrist bands, since subsequent repairs and restoration may have changed the original components. Also, we cannot guarantee the authenticity or originality of any engraving or re-engraving on watch cases, case backs, bracelets, straps or internal movements. **£200-300**



167

A long cultured pearl necklace with a Modernist centrepiece, comprising four cylinders each set with a diamond accent on both sides, attached to a hand-knotted strand of round cultured pearls, measuring 6.2 mm in diameter, metal testing as silver and 18ct, overall length 83.0 cm, 59.6 grams.

Please note: Unless otherwise stated, lots have been tested using an electronic tester. This is a surface test only and is not a guarantee of metal purity. **£200-300**



168

An Edwardian amethyst and diamond lavalier necklace and a pair of earrings; the pendant of floral design, comprising a pale octagonal-cut amethyst of 15.2 x 12.4 x 8.5 mm, in claw setting with diamond accents to the cardinal points, to a conforming surmount set with a rock crystal, 4.8 cm drop length, on a 52.0 cm long fine cable link chain; together with a pair of step-cut amethyst drop earrings, measuring 14.1 x 10.3 mm, hook fittings; unmarked white metal testing as silver; total weight of items 12.3 grams. (2)

Please note: Unless otherwise stated, lots have been tested using an electronic tester. This is a surface test only and is not a guarantee of metal purity. **£100-200**



Jewellery, Watches, Coins & Silver, 2nd Jan, 2026 13:00

- 169 A chrome diopside and garnet cluster ring in 9ct yellow gold, the navette-shaped cluster centred with an oval-cut chrome diopside, framed by a frame of circular-cut garnets and an outer frame of circular-cut diopsides, between tapered shoulders, British hallmarks, signed 'QVC', ring head 2.4 x 2.2 cm, size O, 3.7 grams. **£150-250**



- 170 A three-stone diamond pendant, claw-set with three round brilliant diamonds of graduated sizes, with an estimated total diamond carat weight of 0.50ct, in a 9ct white gold mount, to a 9ct gold flat curb link chain, measuring approximately 46cm; 3.6 grams **£400-600**



- 171 A diamond eternity ring, featuring forty round brilliant-cut diamonds, with an estimated total carat weight of 0.72ct, claw-set in white metal marked '18K', size T, 1.0 grams. **£200-300**



- 172 A jadeite pendant and a pair of earrings; the pendant set featuring a round jade bi disc, in a conforming surround and centred with a pierced Chinese character for 'feelings', yellow metal stamped '18K', 3.1 cm drop length; the pair of stud earrings each containing an oval jadeite cabochon of 12.0 x 9.0 mm, in a wire surround with post fittings, yellow metal stamped '750'; total weight of items 7.5 grams. (2) **£150-250**



- 173 A diamond-set half hoop ring, claw-set with seven single-cut diamonds, to a bi-colour metal mount marked '18ct' and 'Plat', size Q; 2.3 grams **£200-300**



Jewellery, Watches, Coins & Silver, 2nd Jan, 2026 13:00

- 174 A cultured pearl necklace, comprising a single row of 112 cultured pearls, alternating between cream and peacock shades, the cream pearls measuring approximately 6.8mm in diameter, the peacock pearls measuring approximately 9.2mm in diameter, hand knotted and measuring approximately 106.0cm in length, 108.0 grams. **£200-300**



- 175 A tiger's eye necklace and a bracelet; the necklace comprising a hinged tiger's eye pendant carved as a twisted horn, with applied stripe decorations, on a fine cable link chain with spring-ring clasp, in yellow metal struck with Italian assay marks for 18ct, 41.0 cm, 8.7 grams; together with a carved tiger's eye link bracelet, alternating with gilt twisted cable links, 19.5 cm long. (2) **£200-300**



- 176 A diamond trilogy ring, claw-set with three graduated round brilliant-cut diamonds, between fleur-de-lis shoulders to D-profile shank, in bi-coloured metal stamped 'PLAT 18ct', size Q½, 3.1 grams. **£250-350**



- 177 A gem-set peacock brooch, the body set with a large pear-cut synthetic colour-change sapphire, to a mount composed of twisted cables, tail scattered with claw-set gemstones such as turquoise cabochon and circular-cut emeralds, etc., crown embellished with cultured pearls, brooch fittings to the reverse, yellow metal bearing Israeli hallmarks for 14ct, 7.5cm x 5.0cm, 16.5 grams. **£500-700**



- 178 A five-stone sapphire ring, comprising three grain-set blue oval-cut sapphires interspersed with two grain-set oval-cut pink sapphires, in yellow metal surface testing as 18ct, size P, 6.0 grams.
Please note: Unless otherwise stated, lots have been tested using an electronic tester. This is a surface test only and is not a guarantee of metal purity. **£300-500**



Jewellery, Watches, Coins & Silver, 2nd Jan, 2026 13:00

- 179 A large synthetic ruby pendant on chain, featuring a large oval-cut synthetic ruby of 18.0 x 13.5 x 8.5 mm, in a claw setting with tapered bail, yellow metal testing as 9ct, on a 60.0 cm long flat anchor link chain with lobster clasp, pink metal stamped '10K', 9.8 grams.
Please note: Unless otherwise stated, lots have been tested using an electronic tester. This is a surface test only and is not a guarantee of metal purity. **£150-250**



- 180 A heart-shaped pendant with diamonds, comprises a hollow heart pendant in yellow precious metal, fully pavé set with rose-cut diamonds, engraved scrollwork on the edges, pierced lattice and daisy motif at the reverse, suspending on a dove surmount with diamond and ruby accents, to a shepherd's crook bail, Syrian hallmarked '12ct', overall measuring 4.9 x 2.6 cm, total weight of item 10.0 grams. **£300-500**



- 181 A diamond-set ring, of a chequerboard design, comprising three round brilliant-cut diamonds in square mounts, interspersed with smaller diamond accents, estimated total weight 0.38ct, in yellow metal stamped '750', size O, 5.49 grams. **£500-700**



- 182 An amethyst trilogy ring, centred with an oval-cut amethyst flanked by further two pear-cut amethysts, with pierced chevron shoulders to tapering shank, in yellow metal stamped '9K', size K, 2.1 grams. **£150-250**



- 183 A synthetic orange sapphire ring, with an emerald-cut synthetic sapphire in reddish-orange colour, double claw set on a yellow metal mount, floral details on gallery and shoulders, to a D-profile shank, marked '14k', ring size O, total weight of item 4.8 grams. **£150-250**



Jewellery, Watches, Coins & Silver, 2nd Jan, 2026 13:00

- 184 A cultured pearl and diamond necklace and a pair of cultured pearl and diamond earrings; the necklace comprising a 8.3mm cream cultured pearl detailed with a diamond-set surmount of foliate design, to a stylized bale and suspended from an 18ct fine curb-link chain measuring approximately 46.0cm in length, completed with a lobster clasp, the setting in yellow metal surface testing as 18ct; together with a pair of cultured pearl and diamond earrings, each featuring a cream oval-shaped cultured pearl of approximately 7.4mm x 8.3mm, to a surmount collet-set with a single round brilliant-cut diamond, with post and butterfly fittings, in 18ct white gold, drop length approximately 12.7mm; Gross weight of items 8.5 grams (2). Please note: Unless otherwise stated, lots have been tested using an electronic tester. This is a surface test only and is not a guarantee of metal purity. **£300-500**



- 185 A sapphire and paste-set half-hoop ring, claw-set in an alternating pattern, to a 9ct gold mount, size Q; 1.8 grams **£100-200**



- 186 A pair of paste and diamond drop earrings, each claw-set with a purple pear-cut paste, with single-cut diamond surmount, peg and butterfly fittings, in white metal surface testing as 9ct, 1.8 cm drop, 3.5 grams. Please note: Unless otherwise stated, lots have been tested using an electronic tester. This is a surface test only and is not a guarantee of metal purity. **£80-120**



- 187 A diamond solitaire ring, comprising a central round brilliant-cut diamond in a six claw setting, with an estimated carat weight of 0.83ct, to tapering shoulders with circular drilled detail, to an 18ct white gold knife-edge band, size N, 4.9 grams. **£300-500**



Jewellery, Watches, Coins & Silver, 2nd Jan, 2026 13:00

- 188 A jade pendant on chain, comprising a large jadeite bi disc, of mottled green on a bluish white ground, measuring 5.5 cm wide, to a trefoil mount embellished with rubies, suspended on a loose rope chain 77.0 cm, white metal marked '14K', 35.5 grams. **£300-500**



- 189 A diamond-set band, featuring a gypsy-set round brilliant diamond with an estimated carat weight of 0.05ct, to a white metal band with ridged design, marked 'P950', size P1/2; 6.0 grams **£250-350**



- 190 A diamond-set full eternity ring, grain-set with old-cut diamonds, of various sizes, in an unmarked white metal mount, surface tested as 18ct, size K (measured with beads); 4.7 grams
Please note: Unless otherwise stated, lots have been tested using an electronic tester. This is a surface test only and is not a guarantee of metal purity. **£400-600**



- 191 A pair of diamond-set stud earrings, each consisting of three graduated round brilliant-cut diamonds, with an estimated total weight of 1.00ct for the pair, ear post fittings, butterfly backs deficient, unmarked white metal surface testing as 18ct, 1.3 cm, 1.7 grams.
Please note: Unless otherwise stated, lots have been tested using an electronic tester. This is a surface test only and is not a guarantee of metal purity. **£400-600**



- 192 Two opera-length cultured pearl necklaces; the first featuring oval-shaped cultured pearls of approximately 9.0 x 7.75 mm each, of cream body colour with silver pink lustre, length approximately 332 cm; the second featuring off round, oval and teardrop shaped cultured pearls, ranging from 8.0 to 14.0 mm each, individually knotted to a toggle clasp in unmarked yellow metal, surface testing as 14ct, length approximately 165cm.
Please note: Unless otherwise stated, lots have been tested using an electronic tester. This is a surface test only and is not a guarantee of metal purity. **£250-350**



Jewellery, Watches, Coins & Silver, 2nd Jan, 2026 13:00

- 193 A diamond-set dress ring, flush-set with a round brilliant-cut diamond with an estimated weight of 0.20ct, to a band with a central indentation, Indian assay marks '750', size P, 10.0 grams. **£700-900**



- 194 A star sapphire and diamond-set ring, centrally set with an oval sapphire cabochon, displaying asterism, in a bezel setting leading to diamond-set shoulders, in an unmarked white metal mount, surface tested as 9ct, size O; 6.7 grams
Please note: Unless otherwise stated, lots have been tested using an electronic tester. This is a surface test only and is not a guarantee of metal purity. **£500-700**



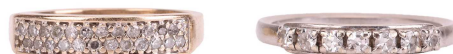
- 195 Two pairs of earrings; to include a pair of tassel earrings with cultured pearl drops, on fine serpent links to a beaded surmount with peg and butterfly fittings, in yellow metal stamped '14K', 3.5 cm drop; and another pair of stud earrings of trefoil design, each set with three glass spherical beads, in yellow metal surface testing as 14ct; total weight of items 5.2 grams. (2)
Please note: Unless otherwise stated, lots have been tested using an electronic tester. This is a surface test only and is not a guarantee of metal purity. **£80-120**



- 196 A cultured pearl necklace with gem-set clasp in 9ct gold, comprising a strand of round cultured pearls of 6.0 mm, hand-knotted to a cluster box clasp set with circular-cut sapphires and cultured pearls, British assay marks, overall length 50.0 cm, 30.4 grams. **£200-300**



- 197 Two rings; comprising a diamond-set seven-stone ring, in a white metal mount marked '750', size N, together with a diamond-set dress ring, grain-set with round brilliant diamonds in a 9ct yellow gold mount, size L; 4.8 grams (2) **£250-350**



Jewellery, Watches, Coins & Silver, 2nd Jan, 2026 13:00

- 198 A pair of jade heart drop earrings, each consisting of a carved heart-shaped jadeite, on a flowerhead surmount, chain suspended from an ear post and butterfly fitting, unmarked yellow metal surface testing as 18ct, overall drop length 3.0 cm, 3.2 grams.
Please note: Unless otherwise stated, lots have been tested using an electronic tester. This is a surface test only and is not a guarantee of metal purity. **£100-200**



- 199 An emerald dress ring, featuring a deep green coloured emerald with sub-translucent transparency, approximately measuring 11.1 x 12.1 mm, bar set on a yellow metal mount surface tested as 18ct, with trumpeted shoulders to a court profile shank, unmarked, ring size N, total weight of item 10.3 grams. **£700-900**



- 200 A sapphire and diamond dress ring, the egg-shaped ring head collet-set with an oval-cut sapphire of 7.0 x 5.5 x 4.2 mm, in surround bead-set with round brilliant-cut diamonds, leading to tapering shank in yellow metal marked '750', ring head 1.5 x 1.1 cm, size N, 7.2 grams. **£600-800**



- 201 A sapphire and diamond dress ring, consisting of eight baguette-cut sapphires, channel set in a yellow metal mount, further six brilliant diamonds with an estimated total weight of 0.36ct, pavé set on each side of the under gallery, scrolled shoulders to a tapered flat shank, marked as '18', ring size O, total weight of item 9.6 grams. **£500-700**



- 202 A diamond line bracelet, comprising fifty-two round brilliant-cut diamonds, each measuring approximately 2.8mm x 1.7mm, with an estimated total carat weight of 4.16ct, each stone in a four claw setting and connected by articulated links, bracelet measuring approximately 18.0cm in length, all in white metal stamped '14K', 12.5 grams. **£1,500-2,000**



Jewellery, Watches, Coins & Silver, 2nd Jan, 2026 13:00

- 203 A diamond-set pendant, composed of a round brilliant diamond measuring approximately 5.4mm, with an estimated carat weight of 0.60ct, bezel-set in a hexagon-shaped setting, with a diamond-set surmount, in white metal surface tested as 18ct, to a white metal trace link chain and bolt ring clasp marked '925', 3.6 grams
Please note: Unless otherwise stated, lots have been tested using an electronic tester. This is a surface test only and is not a guarantee of metal purity. **£500-700**



- 204 An Art Deco style panel ring, centrally-set with a bezel-set round brilliant diamond, within a diamond-set openwork panel, to a white metal shank marked 'plat', size N; 3.3 grams. **£500-700**



- 205 A ruby and diamond-set openwork navette brooch, composed of a row of alternating ruby and rose-cut diamonds (with four later-added synthetic rubies), of navette form, in cut-down white metal mounts, with two additional rubies set to the inside of the ruby and diamond border, the round cabochon ruby and the marquise-shaped ruby in millegrained collet settings, brooch measuring 4.6cm x 2.6cm, with pin and C clasp fitting, pin stamped with Austrian Heron head mark indicating gold and silver, the pin fitting surface testing as 18ct, 5.0 grams
Please note: Unless otherwise stated, lots have been tested using an electronic tester. This is a surface test only and is not a guarantee of metal purity. **£400-600**



- 206 A pair of South Sea cultured pearl and diamond drop earrings, each comprising a large egg-shaped white South Sea pearl of 13.0 mm, to an articulated bar surmount, paved with round brilliant-cut diamond accents, peg and butterfly fittings, white metal marked '18K', drop length 3.7 cm, 10.2 grams. **£500-700**



- 207 A double pearl lariat necklace, composed of popcorn link chain, with two cultured pearls at each terminal, of cream and grey body colour, measuring approximately 12.2mm each, set beneath a diamond-set stylised heart motif, in white metal marked '18K', with maker's mark 'WCJ', the necklace measuring approximately 43cm, with push bar clasp and safety catch; 18.1 grams **£1,000-2,000**



Jewellery, Watches, Coins & Silver, 2nd Jan, 2026 13:00

- 208 An unheated colour-change Ceylon sapphire solitaire ring, featuring an oval-cut sapphire of medium purplish-blue colour, measuring 12.2mm x 8.4mm x 8.0mm, with an estimated carat weight of 7.61ct, claw-set between triangular shoulders set with diamond accents with an estimated total weight of 0.12ct, to D-profile shank in unmarked yellow metal surface testing as 18ct, size T½, 6.6 grams.
Accompanied by a verbal report from the Gemmological Certification Services confirming the colour-change sapphire to be Sri Lankan in origin, with no indications of heating. (Ref: 5786-0602)
Please note: Unless otherwise stated, lots have been tested using an electronic tester. This is a surface test only and is not a guarantee of metal purity. **£2,500-3,500**



- 209 **Breitling - A Chronomat Wristwatch**
Reference: 808/217012
Serial: 1132012
Year: circa 1960s
Bezel: Rotating (Deficient)
Case Material: Stainless Steel
Case Diameter: Approximately
Dial: White, Dauphine Hands (Warped), Rehaut Deficient
Numerals: Baton, Minute Track
Crown: Signed, Fluted, Two Chronograph Pushers
Movement: Breitling (Venus Base Calibre 175) 17-Jewel Manual Wind Movement
Complication: 45-Minute Subsidiary Dial at three o'clock, Seconds Subsidiary Dial at nine o'clock, Centre Chronograph Seconds
Strap: After-Market Stainless Steel Mesh Strap
Inner Circumference: Approximately 19.0cm
Buckle: After-Market Stainless Steel Fold-Over Clasp
Box: No
Papers: No
Gross Weight: Approximately 75.5 grams
Please note: Unless otherwise stated, lots have been tested using an electronic tester. This is a surface test only and is not a guarantee of metal purity. **£800-1,200**



Jewellery, Watches, Coins & Silver, 2nd Jan, 2026 13:00

210

Montblanc - A Heritage Spirit Moonphase Wristwatch

Reference: 7321

Serial: PLBD3ZW1

Year: Contemporary

Bezel: Smooth

Case Material: Stainless Steel

Case Diameter: Approximately 40mm

Dial: Silvered, Sunburst, Dauphine Hands

Numerals: Baton, Roman at twelve o'clock

Crown: Signed, Fluted

Movement: Montblanc Calibre MB 2914 25-Jewel Automatic Movement

Complication: Moonphase and Date Wheel at six o'clock

Strap: Stainless Steel

Inner Circumference: Approximately 20.0cm

Buckle: Signed, Stainless Steel Push-Button Fold-Over Clasp

Box: Yes

Papers: Guarantee Certificate and Service Guide Only.

Gross Weight: Approximately 138.0 grams.

No long-term tests have been performed and accuracy cannot be guaranteed. A full service is advised on all watches and pocket watches once purchased.

It is also important to note that we cannot guarantee the authenticity or originality of individual components, such as wheels, hands, crowns, crystals, screws, bracelets, and wrist bands, since subsequent repairs and restoration may have changed the original components. Also, we cannot guarantee the authenticity or originality of any engraving or re-engraving on watch cases, case backs, bracelets, straps or internal movements. **£1,000-2,000**



Jewellery, Watches, Coins & Silver, 2nd Jan, 2026 13:00

- 211 **Breitling - An Avenger II Seawolf Chronometer**
Reference: A17331
Serial: 1605344
Year: Purchased 1996
Bezel: Uni-Directional
Case Material: Stainless Steel
Case Diameter: Approximately 45mm
Dial: Yellow
Numerals: Arabic, Luminous Baton at six and nine o'clock, Luminous Triangle at twelve o'clock, Minute Track
Crown: Signed, Fluted
Movement: Automatic
Complication: Date Aperture at three o'clock
Strap: Signed, Black Rubber
Inner Circumference: Approximately 20.0cm
Buckle: Signed, Stainless Steel Push-Button Fold-Over Clasp
Box: Yes
Papers: Guarantee Card and Booklet Only.
Gross Weight: Approximately 192.0 grams
 Please note this watch has not been opened. The movement has not been checked and therefore cannot be guaranteed.
 For your protection, every watch with an estimate over £1,500 is checked against the Watch Register. This is an independent company who hold the world's largest, most established, international database of lost, stolen, and fake watches, containing data compiled over 35 years - providing Dawsons' buyers with complete peace of mind.
 No long-term tests have been performed and accuracy cannot be guaranteed. A full service is advised on all watches and pocket watches once purchased.
 It is also important to note that we cannot guarantee the authenticity or originality of individual components, such as wheels, hands, crowns, crystals, screws, bracelets, and wrist bands, since subsequent repairs and restoration may have changed the original components. Also, we cannot guarantee the authenticity or originality of any engraving or re-engraving on watch cases, case backs, bracelets, straps or internal movements. **£1,200-1,800**

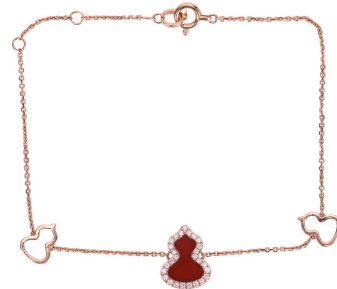


- 212 **Tiffany & Co. - A 'Diamonds by the Yard' necklace in 18ct yellow gold, designed by Elsa Peretti, set with one round brilliant-cut diamond weighing 0.05ct, in a spectacle setting on a fine cable link chain, completed with spring-ring clasp, signed, London hallmarked, 40.0cm in length, 1.6 grams. No box. No papers. In travel pouch. £400-600**



Jewellery, Watches, Coins & Silver, 2nd Jan, 2026 13:00

- 213 A Qeelin 'Wulu' bracelet set with carnelian and diamonds, featuring Chinese Hulu gourd motifs, set with an agate panel and diamond accents, signed and numbered, in pink metal stamped 'Au750', overall length 18.0 cm, 2.2 grams. **£150-250**



- 214 Boucheron - 'My First Four' quatre ring, the polished flat band of tri-coloured metal with a segment of PVD coating, signed and numbered, Swiss assay marks for 18ct, size P (EU size 56), 5.3 grams. **£400-600**



- 215 Cartier - a 'Love' pendant on chain, set with three brilliant-cut diamond accents, the annulet pendant engraved with screw motifs, signed and numbered, pink metal marked 'Au750', 2.5 cm wide, on a 42.0 cm fine trace link chain, 12.7 grams. With travel pouch, no papers. RRP £4,800 **£1,500-2,000**



- 216 Tiffany & Co. - a 'Tiffany Soleste' double row ring, claw-set with one cushion modified brilliant-cut diamond weighing 0.45ct, surrounded by and set on the shank with bead-set round brilliant-cut diamonds weighing approximately 0.32ct total, in white metal marked 'PT950', signed and numbered, size K½, 5.3 grams. Accompanied by a Tiffany diamond certificate, stating the principal diamond has a colour grade of F, and clarity grade VVS2. With box and papers. **£1,500-2,000**



- 217 Tiffany & Co. - a diamond solitaire ring, composed of a princess-cut diamond, with a carat weight of 0.87ct, and an estimated colour and clarity grade of H, VS2, in a four-prong setting, to a knife-edge shank in white metal stamped 'PT950' and 'Tiffany & Co', size I1/2, together with branded box, outer box and bag; 4.4 grams **£2,000-3,000**



Jewellery, Watches, Coins & Silver, 2nd Jan, 2026 13:00

218 Patek Philippe - A Fine 18ct Yellow Gold Gondolo Wristwatch

Reference: 4824/1

Serial: 1969806/4068734

Year: Purchased 2000

Bezel: Smooth, Stepped

Case Material: 18ct Yellow Gold

Case Diameter: Approximately 22mm x 30mm

Dial: White, Black Leaf Hands

Numerals: Black Arabic Numerals, Minute Track

Crown: Signed, Fluted

Movement: Patek Philippe Calibre E.15 Six-Jewel Quartz

Movement, numbered '1969806'

Strap: Brick-Link Strap

Inner Circumference: Approximately 17.0cm

Buckle: Signed 18ct Yellow Gold Fold-Over Clasp

Box: Yes (Distressed)

Papers: Yes. Certificate of Origin, Movements Booklet and Distributors Booklet Only in Patek Philippe Pouch and Sleeve.

Gross Weight: Approximately 92.5 grams

The model name 'Gondolo' was termed as a result of a unique partnership between Patek Philippe and Rio de Janeiro retailer Gondolo & Labouriau during the early 1900s. Beginning with pocket watches, between 1902 and 1930, Patek Philippe produced a small, prestigious selection for Gondolo & Labouriau, termed the 'Chronometro Gondolo'. The Gondolo name was revived in 1993, inspired by the early 20th-century models.

For your protection, every watch with an estimate over £1,500 is checked against the Watch Register. This is an independent company who hold the world's largest, most established, international database of lost, stolen, and fake watches, containing data compiled over 35 years - providing Dawsons' buyers with complete peace of mind.

No long-term tests have been performed and accuracy cannot be guaranteed. A full service is advised on all watches and pocket watches once purchased.

It is also important to note that we cannot guarantee the authenticity or originality of individual components, such as wheels, hands, crowns, crystals, screws, bracelets, and wrist bands, since subsequent repairs and restoration may have changed the original components. Also, we cannot guarantee the authenticity or originality of any engraving or re-engraving on watch cases, case backs, bracelets, straps or internal movements. **£6,000-8,000**



- 219 An unheated Burmese sapphire and diamond dress ring, centred with a cushion-cut sapphire of vivid blue colour, approximately 9.6 x 8.0 x 5.6 mm, claw-set within a diamond frame, between shoulders further adorned with diamond accents and 'T' motifs channel-set with calibre-cut sapphires, estimated total diamond weight 2.35ct, the bi-coloured metal stamped '18K 750', ring head 1.8 x 1.5 cm, size N, 8.8 grams. Accompanied by an AnchorCert jewellery report, stating the sapphire to be Myanmar in origin, with no indications of heat treatment. (no.: 327355/20069890) **£10,000-15,000**

